

B-RAD 1400-S

Part Number: 31803



140 - 1.400 NM

MAX SPEED 10,5 RPM

TORQUE + ANGLE LIMITS

**DATA LOGGING WITH
GPS LOCATION**

TORQUE CHECK FUNCTION

TRANSDUCER CONTROLLED

DOUBLE SAFETY TRIGGER

OPTION

SPECIFICATIONS

- **TORQUE RANGE:** 140 - 1.400 Nm
- **SPEED:** 10,5 RPM
- **WEIGHT:** 4,3 Kg with battery, excluding reaction arm and impact socket
- **SQUARE DRIVE:** ¾ inch square drive
- **BATTERY:** Two 18V Li-ion batteries 5.2 Ah/93 Wh
- **NOISE LEVEL:** Maximum 80 dB
- **TORQUE SETTING:** Steps of 1 Nm
- **REPEATABILITY ON SAME JOINT*:** +/- 2%.

*Test results from RAD's certified calibration lab

SUITABLE REACTION ARMS

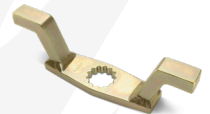
Standard
PN: 19260



Deep socket
PN: 13367



Double ended
PN: 13368



Blank
PN: 13364



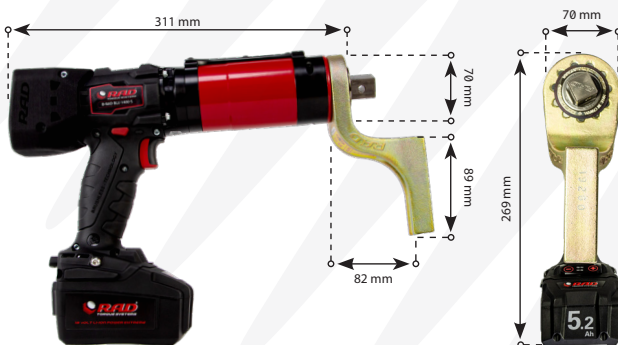
Double ended blank
PN: 13365



Safety sliding
PN: 25243



DIMENSIONS IN MM



TOOL KIT INCLUDING

- B-RAD 1400-S
- Standard reaction arm (PN: 19260)
- Retaining ring (PN: 12733)
- Two batteries with quick charger
- Calibration certificate
- Usermanual
- QR code for Safety instructions
- Weatherproof storage case



IMPERIAL VERSION

- **MODEL:** B-RAD 1000-S
- **PART NUMBER:** 31802
- **TORQUE RANGE:** 100 - 1000 ft.lbs
- **WEIGHT:** 9.4 lbs.



2025 - V.01 Disclaimer: The information in this document is subject to change without notice. While endeavored to keep the information up to date and correct, no rights can be derived. If there are any doubts or questions, please contact Radial Torque Tools B.V..

BATTERY SERIES

Accessories

Drop prevention

Prod. Nr.	Model
200476	B-RAD Drop prevention



Battery packs

Prod. Nr.	Model
31275	5.5 Ah LiHD battery pack
200473	8.0 Ah LiHD battery pack



Double Safety Button

Prod. Nr.	Double Safety Button model	Note	Suitable for
25949	B-RAD Double Safety Button	Hardware only	All B-RADs
25950	B-RAD Double Safety Button	Mounted on tool	All B-RADs
33501	B-RAD Smart Safety Button	Hardware only	All B-RADs
33502	B-RAD Smart Safety Button	Hardware only	Upgrade for all B-RADs with PN: 25950



Impact Sockets

Prod. Nr.	Hex size	Square drive	Bolt size	Suitable for
300153	24MM	1/2"	M16	B-RAD 700-S & 1400-S
200682	27MM	1/2"	M18	B-RAD 700-S & 1400-S
200683	30MM	1/2"	M20	B-RAD 700-S & 1400-S
300097	32MM	1/2"	M22	B-RAD 700-S & 1400-S
200190	24MM	3/4"	M16	B-RAD 700-S & 1400-S
200210	27MM	3/4"	M18	B-RAD 700-S & 1400-S
200211	30MM	3/4"	M20	B-RAD 700-S & 1400-S
200212	32MM	3/4"	M22	B-RAD 700-S & 1400-S
200004	36MM	3/4"	M24	B-RAD 700-S & 1400-S
200215	38MM	3/4"	M24	B-RAD 1400-S
200005	41MM	3/4"	M27	B-RAD 1400-S
200006	46MM	3/4"	M30	B-RAD 1400-S
200216	50MM	3/4"	M33	B-RAD 1400-S
200227	36MM	1"	M24	B-RAD 2000-S & 4000-S
200229	41MM	1"	M27	B-RAD 2000-S & 4000-S
200230	46MM	1"	M30	B-RAD 2000-S & 4000-S
200007	50MM	1"	M33	B-RAD 2000-S & 4000-S
200008	55MM	1"	M36	B-RAD 2000-S & 4000-S
200009	60MM	1"	M39	B-RAD 4000-S
200238	55MM	1 1/2"	M36	B-RAD 7000-S
200297	60MM	1 1/2"	M39	B-RAD 7000-S
300052	70MM	1 1/2"	M45	B-RAD 7000-S
200197	75MM	1 1/2"	M48	B-RAD 7000-S
200241	80MM	1 1/2"	M49	B-RAD 7000-S
200298	90MM	1 1/2"	M52	B-RAD 7000-S

