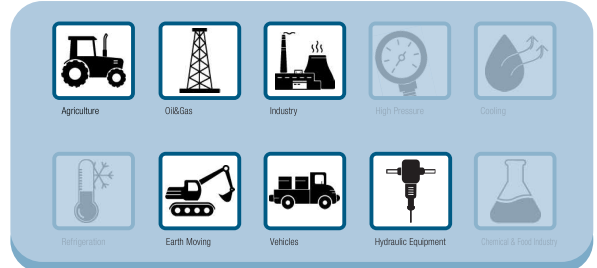




## MAIN APPLICATIONS



## Technical specifications and options



**Sealing description**  
Nitrile NBR



**Available sizes**  
from 1/4" to 2-1/2"



**Material /treatment**  
Carbon steel / Cr3



**Available threads**  
BSP



**Operating pressure**  
Up to 400 bar

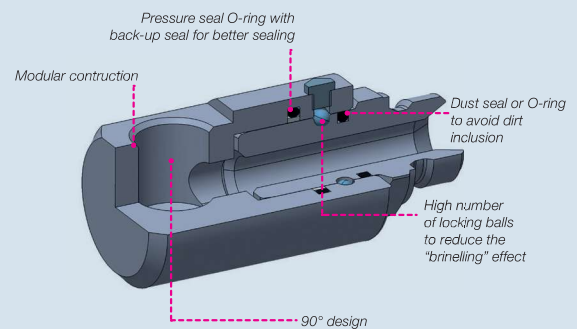


**Temperature**  
-20°C / +100°C

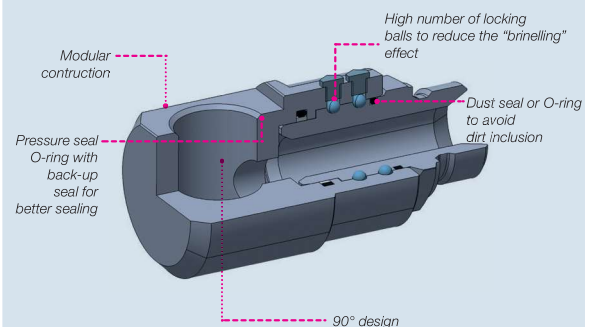
## Benefits

- Compact slim design.
- Safe and simple to use.
- Reduce system rigidity.
- Modularity: male port allows to connect directly to hose lines without adapters reducing overall costs of hydraulics.
- Designed to be mounted between a hose assembly and a rigid component in order to allow and compensate occasional rotations, preventing hose damages.

From sizes 1/4" to 3/4"



From sizes 1" to 2-1/2"



## ⚠ WARNING

A defect, a wrong choice or an improper use of products, can cause injury to persons, animals and objects.

To ensure a good efficiency of the system, it is important to select correctly the dimension based on flow performances and the application working pressure.

All swivel joint must have a flexible connector at one end, connected with proper torque. Warranty is void without a flexible connector on one end.

Make sure that the medium used is compatible with seal and material as indicated.

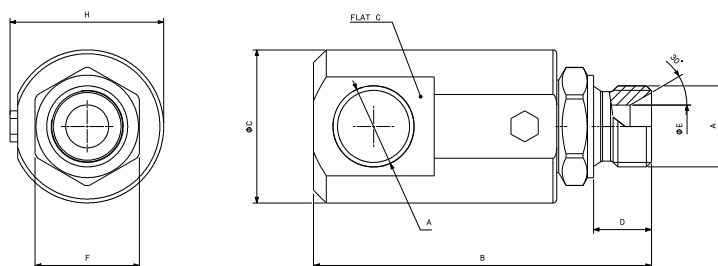
G90 series is intended to be used with standard hydraulic oils in fluid power application. Do not use the G90 series with different fluids (for example with inflammable, corrosive or dangerous fluids, gases ecc). In case of doubt please contact Stucchi Technical Support.

**It is MANDATORY to read and closely follow the instructions. Last updated version always applies at time of installation, see latest Instructions and warnings on Stucchi website before selecting or using Stucchi products.**

## Performances

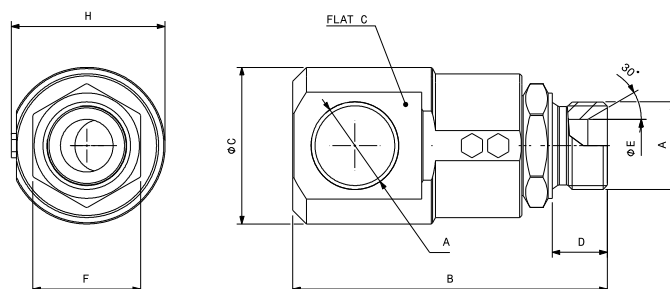
Size	Series	Max. operating pressure			
		in rotation		static	
in		MPa	psi	MPa	psi
1/4	G90 14	20	2900	40	5800
3/8	G90 38	20	2900	40	5800
1/2	G90 12	15	2175	30	4350
3/4	G90 34	15	2175	30	4350
1	G90 100	10	1450	30	4350
1-1/4	G90 114	10	1450	30	4350
1-1/2	G90 112	8	1160	30	4350
2	G90 200	5	725	25	3625
2-1/2	G90 212	5	725	25	3625

## Overall dimensions



## STRAIGHT SWIVEL JOINTS: FEMALE THREAD BSP (from 1/4" to 3/4")

Size	Description	Part Number	Port (A)	Length			Wrench Flat			Internal diameter			External diameter			Length		
				mm	in		mm	in		mm	in		mm	in		mm	in	
1/4"	G90 14 BSP	820500000	1/4"	B	69,0	2,72	F	19	0,75	E	6,5	0,26	C	30,5	1,20	D	11,0	0,43
3/8"	G90 38 BSP	820500001	3/8"	B	78,0	3,07	F	24	0,94	E	9,0	0,35	C	41,5	1,63	D	14,0	0,55
1/2"	G90 12 BSP	820500002	1/2"	B	86,0	3,39	F	27	1,06	E	12,0	0,47	C	44,0	1,73	D	15,0	0,59
3/4"	G90 34 BSP	820500003	3/4"	B	99,0	3,90	F	34	1.34	E	16,0	0,63	C	58,0	2.28	D	19,0	0.75



## STRAIGHT SWIVEL JOINTS: FEMALE THREAD BSP (from 1" to 2-1/2")

Size	Description	Part Number	Port (A)	Length			Wrench Flat			Internal diameter		External diameter		Length				
					mm	in		mm	in		mm	in		mm	in		mm	in
1"	G90 100 BSP	820500004	1"	B	113,0	4,45	F	41	1,61	E	20,0	0,79	C	60,0	2,36	D	21,0	0,83
1-1/4"	G90 114 BSP	820500005	1-1/4"	B	92,0	3,62	F	50	1,97	E	28,0	1,10	C	31,5	1,24	D	24,0	0,94
1-1/2"	G90 112 BSP	820500006	1-1/2"	B	104,0	4,09	F	55	2,17	E	34,0	1,34	C	38,0	1,50	D	25,0	0,98
2"	G90 200 BSP	820500007	2"	B	111,0	4,37	F	65	2,56	E	44,0	1,73	C	45,0	1,77	D	27,0	1,06
2-1/2"	G90 212 BSP	820500008	2-1/2"	B	135,0	5,31	F	80	3,15	E	58,0	2,28	C	55,0	2,17	D	30,0	1,18