

MB-RAD 4000

Part Number: 200926



- 400 - 4.000 NM**
- MAX SPEED 3,0 RPM**
- BLUETOOTH CONNECTIVITY**
- TORQUE + ANGLE LIMITS**
- DATA LOGGING WITH GPS LOCATION**
- TORQUE CHECK FUNCTION**

SPECIFICATIONS

- **TORQUE RANGE:** 400 - 4.000 Nm
- **SPEED:** 3,0 RPM
- **WEIGHT:** 6,1 Kg with battery, excluding reaction arm and impact socket
- **SQUARE DRIVE:** 1 inch square drive
- **BATTERY:** 1x 18V 8.0 Ah/144 Wh and 1x 5.5 Ah/99 Wh Lithium-ion battery
- **NOISE LEVEL:** Maximum 65 dB
- **TORQUE SETTING:** Steps of 1 Nm
- **REPEATABILITY ON SAME JOINT*:** +/- 3%.

* Test results from certified calibration lab

SUITABLE REACTION ARMS

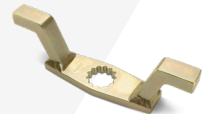
Standard
PN: 24639



Deep socket
PN: 24814



Double ended
PN: 25437



Blank
PN: 24813



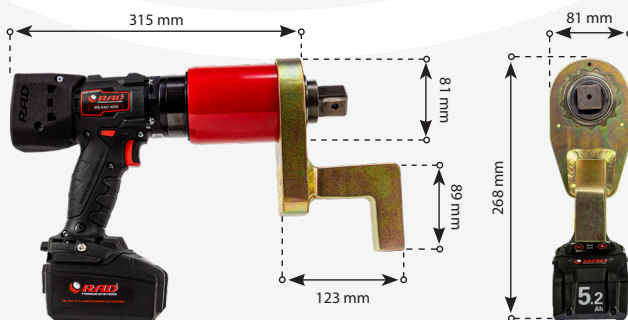
Double ended blank
PN: 25016



Safety sliding
PN: 29430



DIMENSIONS IN MM



TOOL KIT INCLUDING

- MB-RAD 4000
- Standard reaction arm (PN: 27022)
- Two retaining rings (PN: 21474)
- Swivelling tool hanger
- 1 x 5.5 Ah and 1 x 8.0 Ah battery with quick charger
- QR code for Safety instructions
- Weatherproof storage case
- Calibration certificate
- Usermanual



ACCESSORIES

Product	Part number
5.5 Ah LiHD battery (99 wh) (option)	31275
8.0 Ah LiHD battery (126 wh) (option)	200473



2025 - V.01 Disclaimer: The information in this document is subject to change without notice. While endeavored to keep the information up to date and correct, no rights can be derived. If there are any doubts or questions, please contact Radial Torque Tools B.V..

BATTERY SERIES

Accessories

Drop prevention

Prod. Nr.	Model
200476	B-RAD Drop prevention



Double Safety Button

Prod. Nr.	Double Safety Button model	Note	Suitable for
25949	B-RAD Double Safety Button	Hardware only	All B-RADs
25950	B-RAD Double Safety Button	Mounted on tool	All B-RADs
33501	B-RAD Smart Safety Button	Hardware only	All B-RADs
33502	B-RAD Smart Safety Button	Hardware only	Upgrade for all B-RADs with PN: 25950



Impact Sockets

Prod. Nr.	Hex size	Square drive	Bolt size	Suitable for
200680	17MM	½"	M10	MB-RAD 300
300152	19MM	½"	M12	MB-RAD 300
200681	22MM	½"	M14	MB-RAD 300
300153	24MM	½"	M16	MB-RAD 300, 700 & 1400
200682	27MM	½"	M18	MB-RAD 300, 700 & 1400
200683	30MM	½"	M20	MB-RAD 700 & 1400
300097	32MM	½"	M22	MB-RAD 700 & 1400
200187	17MM	¾"	M10	MB-RAD 300
200219	19MM	¾"	M12	MB-RAD 300
200189	22MM	¾"	M14	MB-RAD 300
200190	24MM	¾"	M16	MB-RAD 300, 700 & 1400
200210	27MM	¾"	M18	MB-RAD 300, 700 & 1400
200211	30MM	¾"	M20	MB-RAD 700 & 1400
200212	32MM	¾"	M22	MB-RAD 700 & 1400
200004	36MM	¾"	M24	MB-RAD 700 & 1400
200215	38MM	¾"	M24	MB-RAD 1400
200005	41MM	¾"	M27	MB-RAD 1400
200006	46MM	¾"	M30	MB-RAD 1400
200216	50MM	¾"	M33	MB-RAD 1400
200227	36MM	1"	M24	MB-RAD 2000 & 4000
200229	41MM	1"	M27	MB-RAD 2000 & 4000
200230	46MM	1"	M30	MB-RAD 2000 & 4000
200007	50MM	1"	M33	MB-RAD 2000 & 4000
200008	55MM	1"	M36	MB-RAD 2000 & 4000
200009	60MM	1"	M39	MB-RAD 4000
200238	55MM	1½"	M36	MB-RAD 7000
200297	60MM	1½"	M39	MB-RAD 7000
300052	70MM	1½"	M45	MB-RAD 7000
200197	75MM	1½"	M48	MB-RAD 7000
200241	80MM	1½"	M49	MB-RAD 7000
200298	90MM	1½"	M52	MB-RAD 7000



Battery packs

Prod. Nr.	Model
31275	5.5 Ah LiHD battery pack
200473	8.0 Ah LiHD battery pack

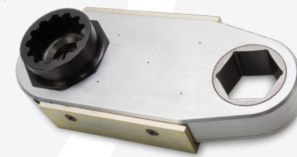


CX Offset Gearboxes

Prod. Nr.	Model	Max output	Ratio
27978	Hex 50 mm	3400 Nm	1:1
28540	Hex 65 mm	5000 Nm	1:1

Prod. Nr.	Suitable for	Gearbox
11537	MB-RAD 300	27978
16155	MB-RAD 700 & 1400	27978
26994	MB-RAD 2000	27978
27853	MB-RAD 4000	27978
28531	MB-RAD 4000	28540

Hex reducer on request.



Nose extension series

Prod. Nr.	Model	Reaction arm	Length
14195	MB-RAD 1400	13512	324 mm
14200	MB-RAD 1400	13512	400 mm
14205	MB-RAD 1400	13512	476 mm
18185	MB-RAD 2000	20153	349 mm
19058	MB-RAD 2000	20153	400 mm
19059	MB-RAD 2000	20153	476 mm
27641	MB-RAD 4000	13484	305 mm
27643	MB-RAD 4000	13484	381 mm
27651	MB-RAD 4000	13484	457 mm



Swivelling tool handle & hanger

Prod. Nr.	Suitable for
19827	MB-RAD 300, 700 & 1400
19825	MB-RAD 2000
26751	MB-RAD 4000
26674	MB-RAD 7000

